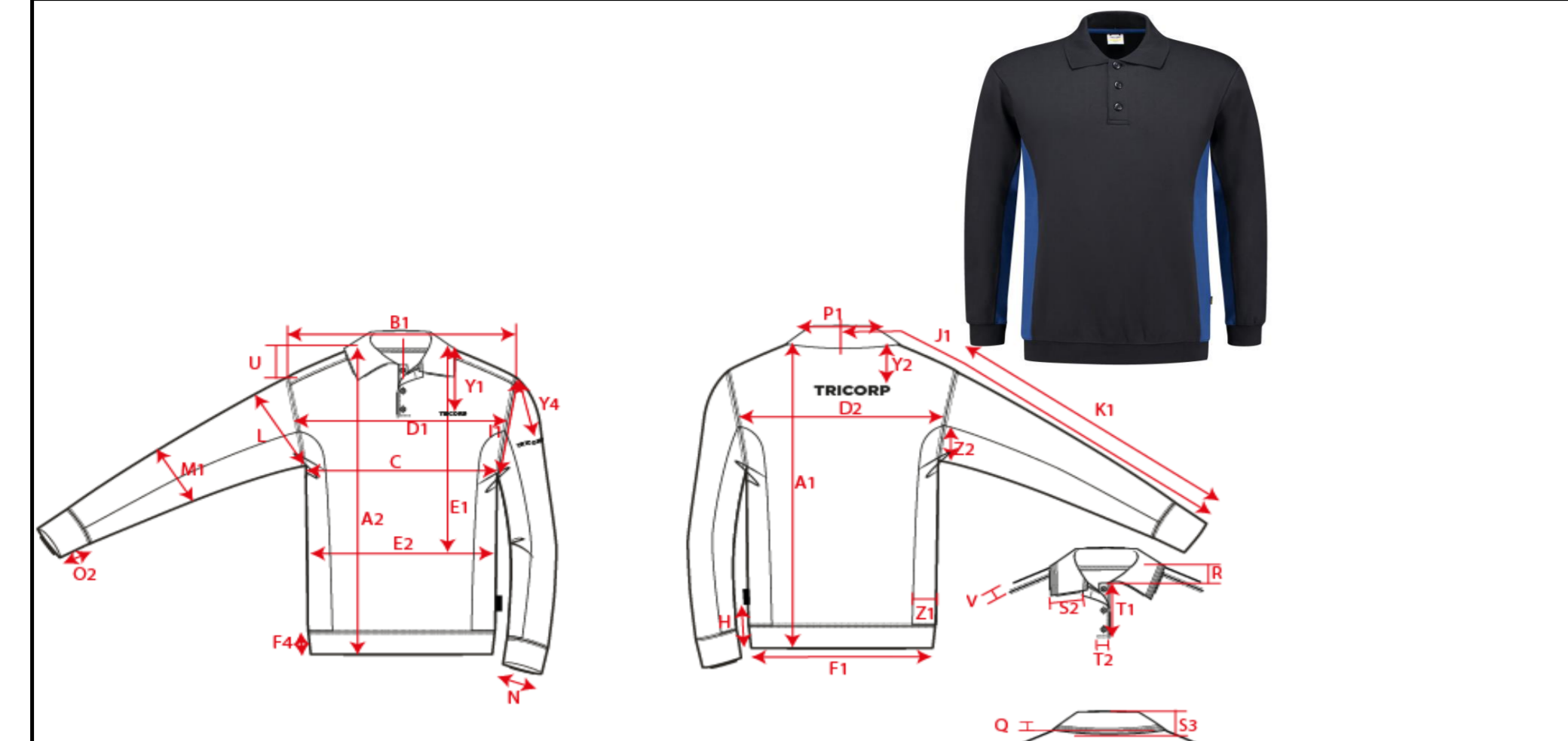


Production Size Specification

TRICORP



Stylenumber:	302003
Styledescription:	Polosweater Bicolor
Productgroup:	Sweaters
Label:	Workwear
Sexe:	Unisex
Fabric Description:	American fleece
Compositon:	Combed cotton /Polyester 60/40%
Weight:	280 g/m <sup>2</sup>
Color:	Navyroyal, Blackgrey, Blackred, Blackorange, Blacklime
Spec from batch nr:	
Date:	9-12-2019

Sketch is for how to measure NOT for style

	XS	S	M	L	XL	XXL	3XL	4XL	5XL	6XL	7XL	8XL	Tol
A1 Total back meas from hsp	71	73	75	77	79	81	83	85,5	86,75	88	89,3	92,5	1,0
B1 Shoulder to shoulder	44,5	47	49,5	52	54,5	57	59,5	61,5	63,5	65,5	67,5	69,5	1,0
C 1/2 chest (at armhole)	48	52	56	60	64	68	72	78	84	90	96	102	1,0
K1 Upper arm length long sleeve	65	66	66	67	68	69	69	70	71	71	71	71	0,5

Remarks: